



Streetfighter 1500Hp EFlex Fuel Filter

Important! Must Read First

Congratulations on the purchase of the Streetfighter 1500 Hp EFlex Fuel Filter for your Ford. To ensure your Fuel Filter is fitted correctly and operates perfectly and reliably we advise that this kit is to be fitted by a Streetfighter Dealer workshop. If you are unable to access a Streetfighter dealer we strongly recommend a professional experienced fully qualified technician to install your new Streetfighter 1500 Hp Fuel Filter. Ask your qualified installer to contact KPM Motorsport on any aspect not clear in the instructions provided. 08 82999 998 / david@kpmmotorsport.com.au

As various skills, procedures, special tools and workshop equipment is needed to install this kit:

- KPM will take NO responsibility or give NO guarantees on the operation of this product for fitment not carried out by a Streetfighter dealer or experienced qualified technician.
- KPM Motorsport will take NO responsibility or give NO guarantees on the operation of this product due to not fitting this kit exactly as per the instructions provided.

Ensure correct workshop safety procedures are carried out in fitment of this kit.

Please read ALL instructions before commencing fitment.

Guaranteed

On satisfaction that ALL instructions have been followed as per this document KPM Motorsport will warrant the Streetfighter 1500hp Eflex fuel filter against any defects or faults for 12 months from the date of purchase.

Important

This Fuel filter is engineered to operate perfectly on all fuels including Petrol, Ethanol's and methanol fuels. It will filter perfectly while supporting fuel flow levels of over 1500hp on all fuels.

This fuel filter is designed to be removed and refit for servicing multiple times and for the lifetime of the vehicle in accordance with instructions below.

The Streetfighter fuel filter is designed only as a direct replacement filter to the standard fuel filter.

The Streetfighter Fuel filter should not be used on any vehicle models that it is not intended for.

The Streetfighter Fuel filter must not be interchanged between vehicles. It is a one vehicle only filter.

The Streetfighter Fuel filter comes assembled with the stainless steel filter element installed, tensioned and ready for fitment.

- KPM will take NO responsibility for any failure of this filter if not fitted in compliance with the recommendations and instructions provided.
- KPM will take NO responsibility for the operation of this fuel filter if using the Streetfighter 1500Hp Flex fuel filter on a vehicle running ethanol fuel that is NOT designed and/or NOT fully retrofitted for E85 Ethanol or flex fuel.

Note:

E85 Ethanol is highly corrosive on many components.

Please be aware that if your car is NOT built for E85 Ethanol from manufacturer, the remaining components in your fuel system will also need to be replaced or suited for E85 Ethanol.

(Examples of some possible non-compatible components - are Fuel pump modules, fuel injectors, , fuel lines, rubber hoses, fittings etc)

Removal of Standard Fuel Filter from Vehicle

Step 1

You will need to reduce residual fuel pressure in the fuel system to 0 kpa to enable disconnection of fuel lines at the filter.

You can do this by removing the fuel pump fuse and running the engine until fuel pressure drops to 0 kpa. (Check you workshop manual for the fuse positioning on your model car)

Step 2

Undo the fittings on both sides of the standard filter with the use of correct spanners **As shown below in Figure 1**. Be aware of residual fuel spillage as fittings are loosened.



Figure 1

Step 3

Carefully move the pipes and fitting away from the standard filter on one side only and slide the filter out from the support bracket in the same direction...**Figure 2**

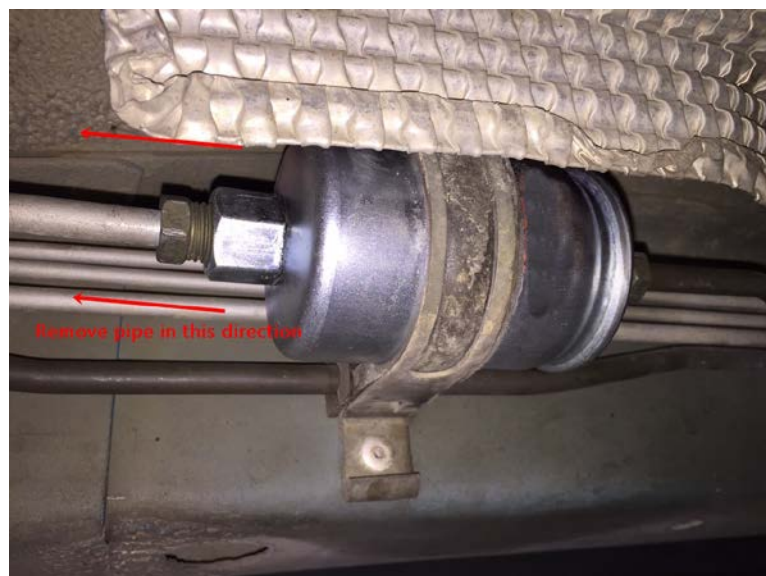


Figure 2

Fitment of Streetfighter Fuel Filter to Vehicle

Step 1

Your new Streetfighter fuel filter is made to exact same dimensions as the standard filter and therefore will slide perfectly on mounting bracket in reverse direction of removal.

Step 2

Ensure you fit the filter with the arrow following the same direction as fuel flow

Step 3

Turn the filter in the bracket so as to show the Streetfighter Logo in line with the fuel lines...
Mark the bracket with a permanent marker in line with the Streetfighter logo. **Figure 3 and 4**



Figure 3



Figure 4

Step 4

Carefully refit both pipes to filter and screw fittings into filter housing. Be careful not to cross thread. Tighten firmly, without over tightening and with correct pipe spanners. **Picture 5**



Figure 5

Step 5

Refit your fuel pump fuse and start vehicle .Run for several minutes ensuring there a no leaks at fittings or filter canister.

Job Done!

Important

It is vital that on future removal of your Streetfighter Fuel filter it is refit with the Streetfighter log in the exact same positioning as originally marked on the bracket. This will ensure that the fittings match their original seating position on the filter and will seal perfectly.

Fuel Filter Maintenance

The Filter element in your Streetfighter filter is made of stainless steel and is designed for lifetime service when regularly maintained. We suggest cleaning your filter every 20, 000 km.

Step 1

Remove the filter assembly from the vehicle.

Step 2

Place on a bench with a drain pan beneath the filter.

Step 3

Using 2x 19mm pipe spanners unscrew the cap end of the filter canister from the main canister. Remove the filter element. **Figure 6 and 7**



Figure 6

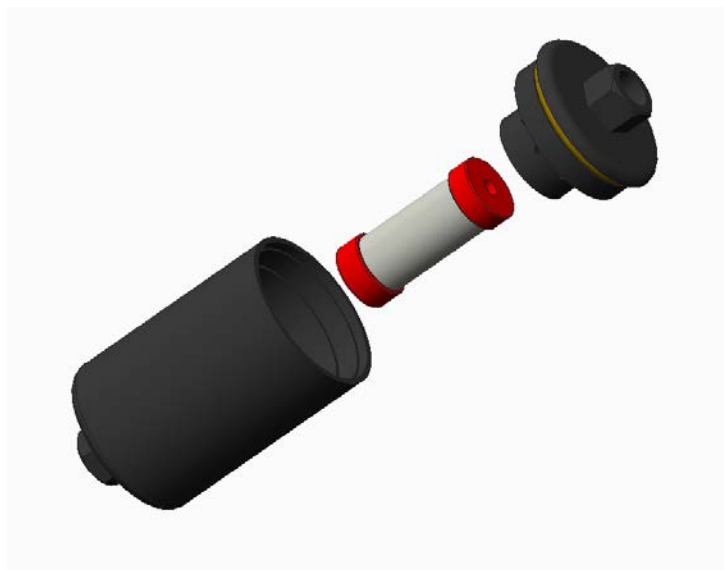


Figure 7

Step 4

Inspect the outside stainless steel filter element for debris. Inspect the magnets inside the outer cage of the element. Remove any black debris (ferrous metal) with a magnetized screwdriver or strong magnet.

Step 5

Rinse the Canister, and O-rings. Hand wipe, inspect all O-rings and replace if damaged. Viton O-Rings will last many years unless cut or otherwise damaged. Do not use Brake-Kleen or Carb Cleaner on O-Rings.

Step 6

The element can now be washed in a CLEAN (new fluid) biodegradable parts washer or hot soapy water. Brake-Kleen or Carb Cleaner can be used to clean stainless steel filter element ONLY.

Step 7

Wash element from inside out. Rinse and if available, use compressed air from inside out to blow off any cleaning agents from your filter element. Again, blow from inside out. Otherwise, shake and allow to completely air dry before re-installing

Step 8

Hold your stainless mesh element to the light to ensure that it is completely clean. If it has particles in the element, return it to the wash area and clean again. Some debris may require multiple flushing to extract.

Step 9

Thoroughly oil all O-rings and threads with clean motor oil. DO NOT TRY TO REASSEMBLE WITHOUT OIL ON ALL THREADS AND O-RINGS.

Step 10

Push the filter element snugly into its position in the main canister.
Screw the canister cap end by hand unto the main canister until it becomes too hard to continue.
Now finish tightening canister cap end securely by using 2 x 19 pipe spanners.
DO NOT OVER TIGHTEN! Over tightening may cause leaks.

Step 11

Refit your Streetfighter filter on vehicle as per instructions above.

Step 12

Start your engine and ensure there are no leaks...